

## EXPERIENCE THE ISLANDS



**Iso-Kraaseli** is the second largest island in Raahe. It has a wooden beacon, a 2.3 km long nature trail, a shelter and a pilots' hut, which can be rented from MeriRaahe, with 13 beds, electricity, running water and a sauna. The nature trail has 15 information boards providing visitors with information about the birds and plants on the island. Sheep graze on the island during summertime and manage the environment. The island also features an excellent example of a gloe lake, and there is a pier for small boats, a kayak pier and a long pier.



**Tasku** island is 410 m long and 240 m wide. The wooden beacon on Tasku was constructed in 1853, and it has remained nearly unchanged, standing in its original spot. Tasku also has an old fishing hut, and a new rest hut and pier. The island is a popular hiking and backpacking destination all year round. In the summer, many visitors head to the beach on the southern shore.



**Kalla** is 300 m long and 230 m wide. This rocky islet has served as a base for fishermen since the 19th century. Kalla has a hut available for public use, owned by the Raahe Fishermen's Association, a campfire site and a pier for landing. The gloe lake and its surroundings possess significant natural value. The island is also known for its beautiful rocky shores.



**Ämmä, Äijä** and Iso-Soini have become a single island, now called Ämmä-Äijä. It is a great daytrip destination in both summer and winter, thanks to its proximity to the mainland. During the summer, sheep graze on this island as well, preventing its vegetation from becoming overgrown. During the bird migration, waders such as the ruff, the wood sandpiper and the spotted redshank can be seen on Ämmä-Äijä. The island has a shelter and a campfire site.



**Ulkopauha** has rocky shores and is surrounded by a shoal, but the island's pier helps with landing there. The island is primarily covered by a deciduous forest and dry heaths that are remarkable representatives of their landscape type. Ulkopauha has a rest hut, owned by the Raahe Fishermen's Association, and a campfire site.



**Smitti** is 350 m long and 200 m wide. It is a popular hiking and backpacking destination with a shelter and a campfire site. Visitors can walk around the island along the rocky shore and a path. Smitti has dry and fresh meadows as well as transition mires and quaking bogs, all rich in flora and fauna. In the summer, the island is home to bleating and grazing sheep, just like Iso-Kraaseli.

## LANDING PROHIBITION

In order to ensure successful bird breeding, the bird islets and islands are subject to a landing prohibition during the nesting season.

**15 April – 15 July:** Saapaskari, Kakkonen, Selkämatala, Kallanriutta, Rääpäkänriutta, Vesimatala, Isokivi, Kurikka, Kusiini, Kanttikivet

**1 May – 20 July:** Rääpäkkä

**1 May – 15 July:** Jyry

## PLEASE DO NOT LITTER IN OUR BEAUTIFUL ARCHIPELAGO

Please make sure to take everything you have brought back to the mainland with you. Do not leave rubbish in nature. Clean paper and cardboard can be burned at a campfire site. Bio waste should not be put in the mixed waste containers or left in nature. You can leave these in the outhouse or in compost converters at resting spots. Hazardous waste, such as batteries, must be taken to hazardous waste collection points. Always clean away any waste produced by you or by others, if necessary.

The Raahe City Technical Center is responsible for maintaining the outdoor areas.

## IN CASE OF AN EMERGENCY

If an accident has occurred, find out what happened and help those in immediate danger. Act calmly and call for help without delay.

Emergency telephone number: **112**  
Maritime search and rescue number: **+358 294 1000**  
or VHF channel: **16 / VHF-DSC 70**

## RAAHE TOURIST INFORMATION

[www.visitraahe.fi](http://www.visitraahe.fi)  
+358 44 439 3240  
[matkailu@raahe.fi](mailto:matkailu@raahe.fi)



## NATURA 2000 AREA

The archipelago of the Raahe coast has been included in the Natura 2000 network thanks to the birds, vegetation and habitat types present there. The total area is 2,240 hectares, approximately 358.5 hectares of which consist of dry land and shoals and about 1881.5 hectares of bodies of water.

The Raahe archipelago is the only significant archipelago in the Gulf of Bothnia between Oulunsalo and the Rahja archipelago of Kalajoki. The archipelago includes both forested inner islands near the coast and small, open islets further out to sea. Early forms of livelihood, such as cattle herding, fishing and maritime transport, have shaped the archipelago and created great scenic value.

## THE ISLANDS AND COAST

Thanks to its proximity and easy accessibility, the Raahe archipelago offers plenty of opportunities for recreational use in the summer and winter. The islands are well suited for boating and kayaking trips, and many of them are relatively easy to land on with a boat. The area is also great for picking berries and mushrooms, which you can freely do thanks to Finland's everyman's rights. In the winter, when the ice is strong enough, many people enjoy skiing, walking or skating on the ice and the islands.

The recreational use of the Raahe archipelago is managed so that the most valuable wildlife areas of Natura 2000 are not disturbed. Explore the Raahe archipelago on a cruise, spend a lovely summer day on the beach on Tasku Island, learn about the unique nature on the nature trail on Iso-Kraaseli Island or enjoy the peace and quiet on the rocky shores of Kalla Island. The trip to these islands only takes about 20 minutes. You will also see historical daymarks during the excursion.

## INSTRUCTIONS ON HOW TO USE THE HUTS

The rest huts on Kalla, Tasku, Ulkopauha and Kuusi-saari are intended for temporary stopovers and maximum stays of one to two nights year-round. Make room for newcomers, as their right to sleep there takes priority. Use firewood sparingly. Smoking is not allowed indoors! Write your name, observations and next destination in the hut's guestbook. Always clean after yourself. Read through the hut-specific instructions found in a folder at each hut.

The booking information for Iso-Kraaseli's pilot's hut can be requested via [www.meriraahe.fi](http://www.meriraahe.fi).

In the Natura 2000 nature protection area, camping is allowed in the immediate surroundings of the shelters, huts and campfire spots.

*Raahe for outdoor enthusiasts*

**AN ARCHIPELAGO OF  
GENUINE STORIES AND  
NATURE'S WONDERS**

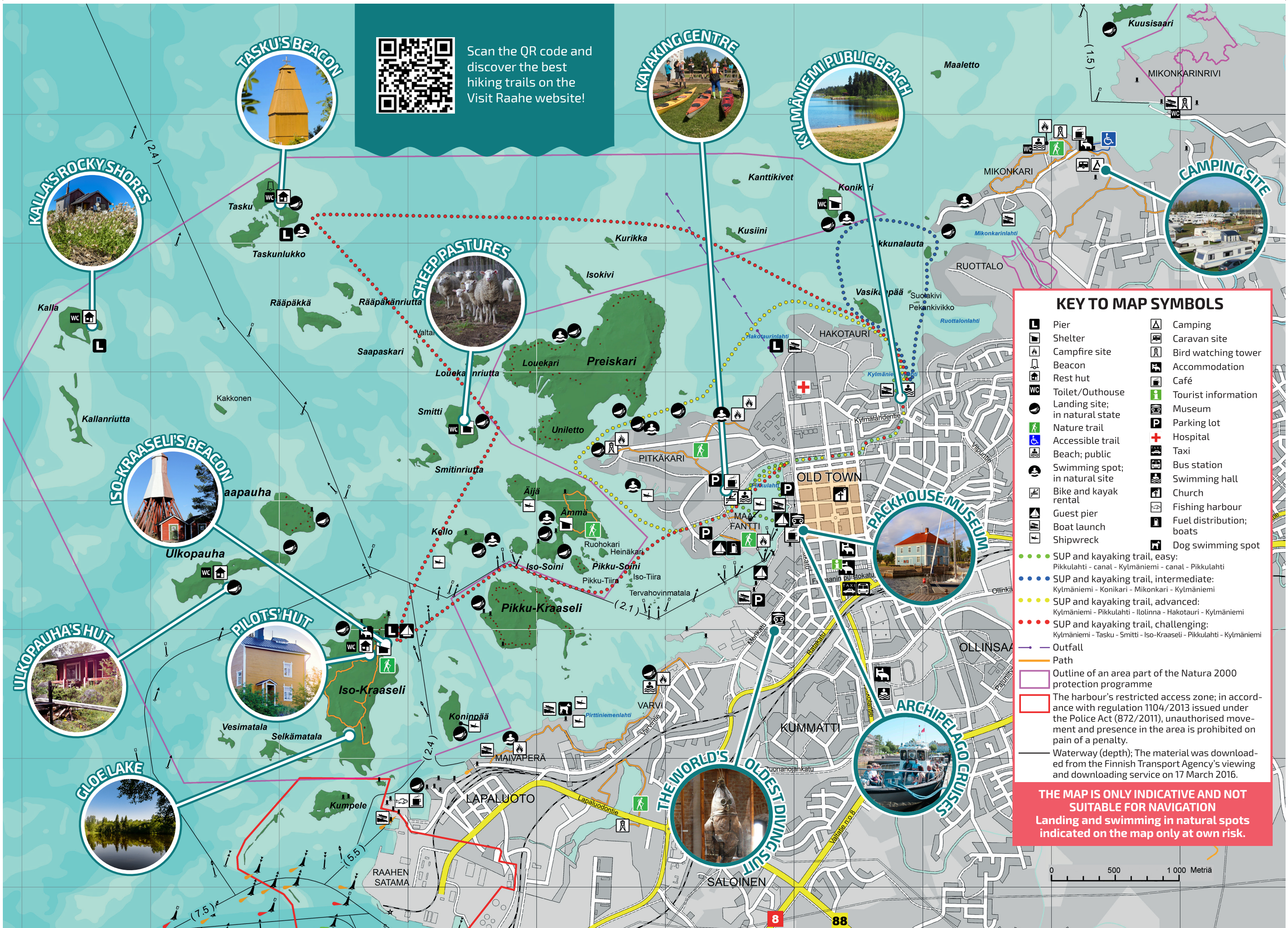


VISIT  
RAAHE  
.FI



Share your best moments in the Finnish Outdoor  
Destination of the year 2016 #visitraahe @visitraahe





Scan the QR code and discover the best hiking trails on the Visit Raahen website!

KEY TO MAP SYMBOLS

- |                                |                          |
|--------------------------------|--------------------------|
| Pier                           | Camping                  |
| Shelter                        | Caravan site             |
| Campfire site                  | Bird watching tower      |
| Beacon                         | Accommodation            |
| Rest hut                       | Café                     |
| Toilet/outhouse                | Tourist information      |
| Landing site; in natural state | Museum                   |
| Nature trail                   | Parking lot              |
| Accessible trail               | Hospital                 |
| Beach; public                  | Taxi                     |
| Swimming spot; in natural site | Bus station              |
| Bike and kayak rental          | Swimming hall            |
| Guest pier                     | Church                   |
| Boat launch                    | Fishing harbour          |
| Shipwreck                      | Fuel distribution; boats |
|                                | Dog swimming spot        |

- SUP and kayaking trail, easy: Pikku-lahti - canal - Kylmäniemi - canal - Pikku-lahti
- SUP and kayaking trail, intermediate: Kylmäniemi - Konikari - Mikonkari - Kylmäniemi
- SUP and kayaking trail, advanced: Kylmäniemi - Pikku-lahti - Ilolinn - Hakotauri - Kylmäniemi
- SUP and kayaking trail, challenging: Kylmäniemi - Tasku - Smitti - Iso-Kraaseli - Pikku-lahti - Kylmäniemi

- Outfall
- Path
- Outline of an area part of the Natura 2000 protection programme

The harbour's restricted access zone; in accordance with regulation 1104/2013 issued under the Police Act (872/2011), unauthorised movement and presence in the area is prohibited on pain of a penalty.

Waterway (depth); The material was downloaded from the Finnish Transport Agency's viewing and downloading service on 17 March 2016.

THE MAP IS ONLY INDICATIVE AND NOT SUITABLE FOR NAVIGATION  
Landing and swimming in natural spots indicated on the map only at own risk.

0 500 1 000 Metriä